



Model: See Affected Units	Feb. 22, 2021
Serial #: N/A	
Product Bulletin # TDS-231 v 1.0	

Encoder Junction Box Safety Securement

The encoder junction box (J-box) top cover may become a dropped object if it is not installed correctly. Canrig recommends adding a safety securement net around the J-box as safety securement.

Affected Units

All Canrig top drives with the encoder J-box mounted to Location 1, the brake actuators on the guard, or Location 2, the brake cover. See encoder J-box locations below.

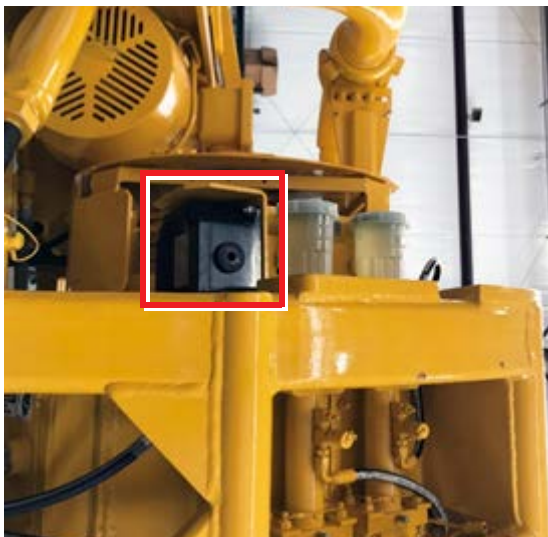


Figure 1: Encoder J-box Location 1

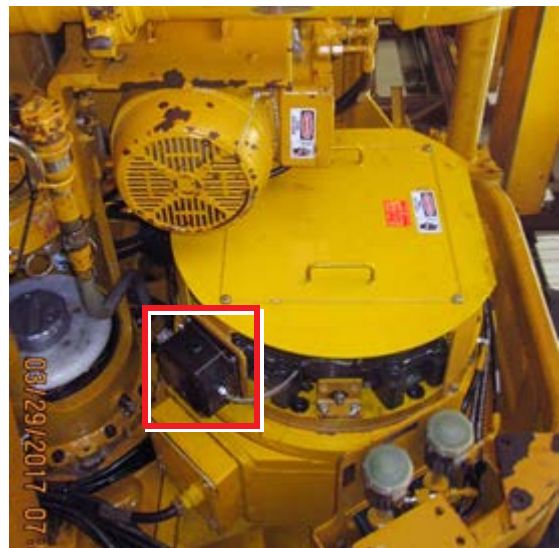


Figure 2: Encoder J-box Location 2

Recommendation

Contact RIGLINE 24/7™ to order the safety securement net, see Table 1 below. Follow provided manufacturer instructions for the installation of the safety securement net.

Table 1: Safety Securement Net Options

Location #	Safety Securement Net Part #	Mounting Location Description
1	M17086	Brake actuator mount on guard
2	M17085	Brake cover mount